

E. S. Gardner,
Sliding Rest for Lathes,
No 18,120, *Patented Sept. 1, 1857.*

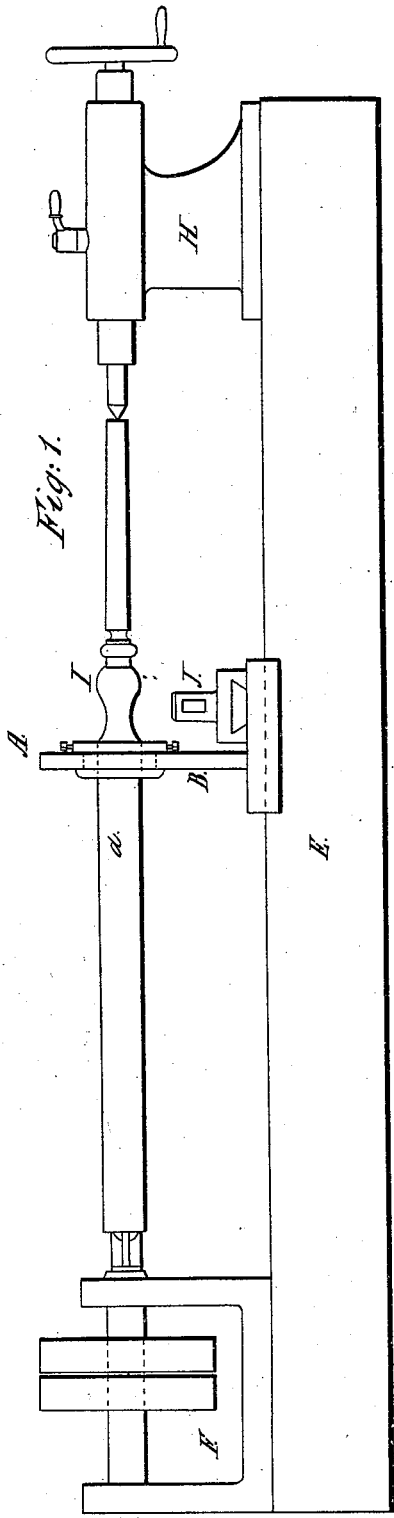


Fig. 1.

Fig. 5.

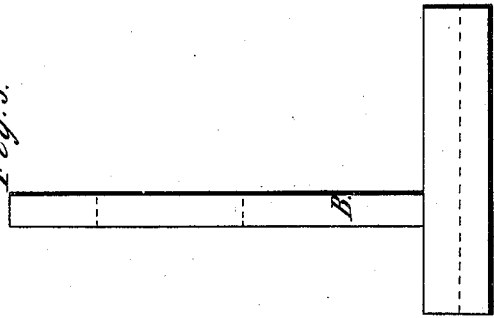


Fig. 2.

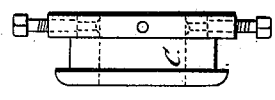


Fig. 4.

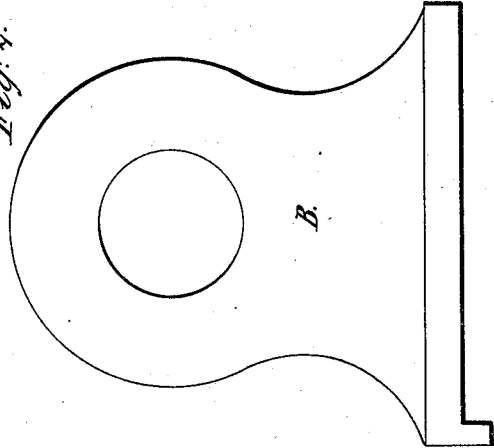
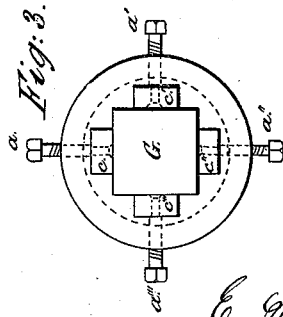


Fig. 3.



Inventor:
E. S. Gardner.

UNITED STATES PATENT OFFICE.

ELEAZOR S. GARDNER, OF PHILADELPHIA, PENNSYLVANIA, ASSIGNOR TO MESSRS. SMITH, GOULD AND CO., OF SAME PLACE.

SLIDING REST FOR LATHES.

Specification of Letters Patent No. 18,120, dated September 1, 1857.

To all whom it may concern:

Be it known that I, ELEAZOR S. GARDNER, of the city of Philadelphia and State of Pennsylvania, have invented a new and useful Improvement in the Turning-Lathe for which a patent was granted to Albin Warth on the 10th day of October, A. D. 1854; and I do hereby declare the following to be a full, clear, and exact description of the same, reference being had to the accompanying drawing and to the letters of reference marked thereon.

My invention relates to an improvement in the steady rest of Warth's patent turning lathe, and consists in furnishing the same with a loose collar having a square eye for receiving the square portion of the object to be turned, in order that the latter may retain its square corners perfectly sharp thereby avoiding the defects common to the steady rest of Warth's lathe in which it is necessary to round off the corners of the square portions of bed posts, banisters and other like objects.

In order to enable others skilled in the art to make and use my invention I will now proceed to describe its construction and operation.

On reference to the drawing which forms a part of this specification, Figure 1 is a general view of Warth's lathe with my improvements attached. Fig. 2, an edge view, and Fig. 3, a face view of my revolving collar. Fig. 4, a face view and Fig. 5 an edge view of the steady rest on which the said collar revolves.

The same letters of reference allude to similar parts throughout the several views.

E is the bed of the lathe, F the front head stock, H the back head stock, I the object to be turned, B the steady rest, J the slide rest secured to the same.

In the steady rest B is an orifice for receiving the collar C the latter being arranged so as to turn freely therein but furnished with collars in such a manner as to have no lateral movement independent of the steady rest. In the collar is the square opening G for receiving the square portion *d* of the object I to be turned, the collar is furnished with dies *c*, *c'*, *c²* and *c³* which can be so operated by screws *a*, *a'*, *a²*, *a³* that the size of the square opening G in the collar may be increased or diminished at pleasure, and thereby adapted to different sizes of the square portions of bed posts, banisters, and other similar objects.

In Warth's lathe the steady rest has but a simple round opening which involves the necessity of cutting off the corners of the objects to be turned, in order that they may be steadied as the rest is traversed along the bed. It will be at once seen without further description that the revolving collar with the square eye obviates these defects.

What I claim and desire to secure by Letters Patent is—

The revolving collar C with its square eye G when the same is employed in conjunction with the steady rest of a turning lathe for which a patent was granted to Albin Warth on the tenth day of October A. D. 1854, in the manner and for the purpose herein set forth.

In testimony whereof, I have signed my name to this specification before two subscribing witnesses.

ELEAZOR S. GARDNER.

Witnesses:

J. C. MOXEY,
ANDW. J. BOSWELL.